

THE RESOURCES AGENCY OF CALIFORNIA
Department of Fish and Game

STREAM SURVEY

Date September 8, 1967

NAME Unnamed tributary # 7 to Garcia River COUNTY Mendocino
 STREAM SECTION FROM Entire, mouth. To headwaters LENGTH .4½
 TRIBUTARY TO Garcia River TWP 12N R 16W SEC 4
 OTHER NAMES None known RIVER SYSTEM Garcia
 SOURCES OF DATA Personal observation

EXTENT OF OBSERVATION Include: Name of Surveyor, Date, Etc.
LOCATION
RELATION TO OTHER WATERS
GENERAL DESCRIPTION
Watershed
Immediate Drainage Basin
Altitude (Range)
Gradient
Width
Depth
Flow (Range)
Velocity
Bottom
Spawning Areas
Pools
Shelter
Barriers
Diversions
Temperatures
Food
Aquatic Plants
Winter Conditions
Pollution
Springs
FISHES PRESENT AND SUCCESS
OTHER VERTEBRATES
FISHING INTENSITY
OTHER RECREATIONAL USE
ACCESSIBILITY
OWNERSHIP
POSTED OR OPEN
IMPROVEMENTS
PAST STOCKING
GENERAL ESTIMATE
RECOMMENDED MANAGEMENT
SKETCH MAP
REFERENCES AND MAPS

EXTENT OF OBSERVATION - 8 August 1967 - 0900-1530. Walked entire stream from mouth to headwaters a distance of 4½ miles.
LOCATION - Mouth - T12N, R 16W, Section 4, approximately 3 miles east and 2 miles north of the town of Point Arena.
RELATION TO OTHER WATERS - Fair contribution to Garcia River at the rate of 2.5 c.f.s. (est.) at mouth (8 August 1967). Fair fisheries value throughout the entire stream as evidenced by juvenile fish found in all parts.
GENERAL DESCRIPTION
Watershed and Immediate Drainage Basin - Stream heads near Mt. View Road and flows in a W-S-W direction for 4½ miles until it enters the Garcia River approximately 2½ miles upstream from Manchester Rancheria. The basin is covered with redwood and Douglas fir and associated shrubs. At the mouth the canyon is bowl-shaped and upstream it progressively U-shaped. The soil ranges from good loam at the mouth to thin rocky as the canyon steepens. Some small springs were present near the headwaters. Along the stream grow alder, maple, bay and redwood and in heavily shaded areas there are many species of fern. The streamside varies from open areas with little vegetation to areas with abundant vegetation,
Altitude (range) - Heads approximately 1200 ft. and drops to tidewater at the mouth.
Gradient - Moderate, approximately 300 ft. per mile. Greater at headwaters 500-600 ft. per mile less at mouth 200-300 ft. per mile.

Width - Average 3½ ft., range 2 ft. - 6 ft.
Depth - Average 3 in. - 5 in., range 2 in. - 24 in.
Flow - Mouth 2.5 c.f.s., range 15-30 c.f.s. (est.).
Velocity - Fairly rapid throughout with slower portions where gradient is small and pools are large.
Bottom - Gravel and rubble with underlying sand.
Spawning Areas - Limited to quieter portions of bed where adequate gravel is available.
Pools - Few, small (6' x 8' x 24" deep) sometimes cluttered with debris.
Shelter - Fair, under logs and under cuts also where rubble is large enough to provide it. Shade is good from vegetation through most of the stream.
Barriers - Many barriers noted however no absolute barriers were seen. With higher water steelhead and salmon would be able to pass all of these barriers. They were mostly small log jams with three definite falls noted no larger than 4 ft.
Diversion - None seen
Temperatures-Air - 62°F, water 55°F - 1030; weather - clear, calm.
Food - Caddis fly and stonefly larvae and adults and available insects from overhanging terrestrial plants. Larvae approximately 10-15 per grapefruit size rubble.

Aquatic plants - Large amounts of filamentous green algae in open and semi-open portions of the stream. Some horsetail along banks.

Winter conditions - Debris up to 2 ft. higher than present level and three times wider would indicate large amount of runoff.

Pollution - None observed

Springs - Three observed below headwaters but were relatively minor in contribution to flow.

FISHES PRESENT AND SUCCESS - SH-RT juveniles observed. Size 2"-5" (est. 25 per 100 ft.). Difficult to say whether fish were resident or migratory since absolute barriers were undefinable.

OTHER VERTEBRATES - Frogs

FISHING INTENSITY - Unknown

OTHER RECREATIONAL USE - None known

ACCESSIBIIITY - By foot from mouth. (We drove out Mountain View Road approx. 2-3/4 miles and turned south on a private, unlocked ranch road. We followed this road down to the river bank and walked upstream approx. ¼ mile) .

OWNERSHIP - Hollow Tree Lumber Co.

POSTED OR OPEN - Posted

IMPROVEMENTS - None observed. Suggest removal of debris and log jams and increased control of logging practices along stream.

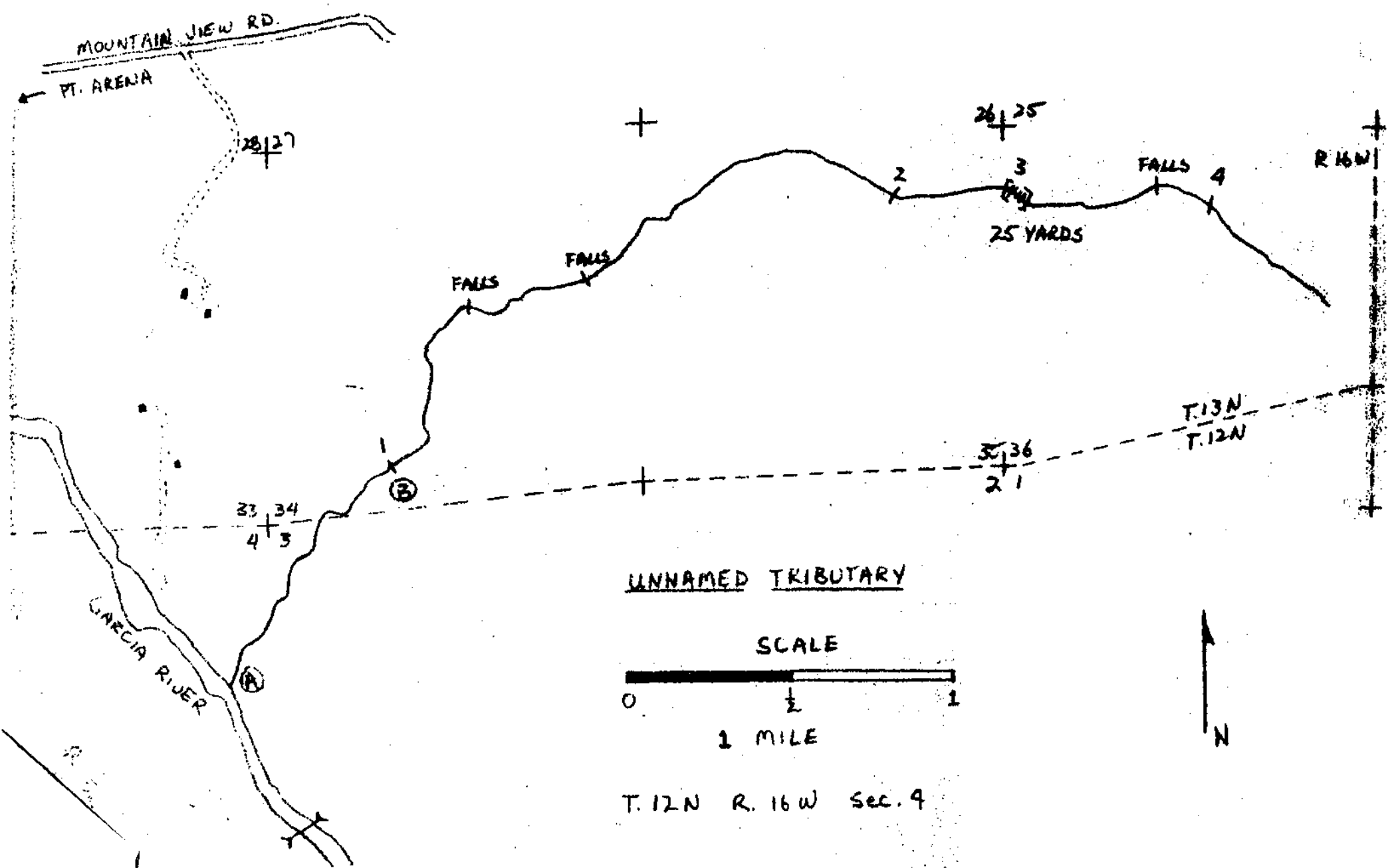
PAST STOCKING - Unknown

GENERAL ESTIMATE - This stream is a fair fisheries stream for steelhead and salmon since the gradient is moderate and available spawning areas will increase with higher water. If logging is to remain in full swing along the stream it could be severely damaged resulting in a useless tributary. The road building and removal of watershed has contributed to a great amount of debris (dirt, rubble and felled trees) along the stream bed. This debris will worsen as it is new this year (1967) and will no doubt be swept into the streambed itself next winter.

RECOMMENDED MANAGEMENT - This stream should remain a salmon and steelhead fisheries stream. Through control of logging activities and debris removal this stream will improve for fisheries use.

SKETCH MAP - Attached

REFERENCES AND MAPS - USGS Point Arena Quad. 1960



UNNAMED TRIBUTARY

SCALE



1 MILE



T. 12N R. 16W Sec. 4