

Figure 11. Length frequency diagrams of fall-run chinook salmon captured at the South Fork Trinity River Weir near Sandy Bar, 1984 through 1990.

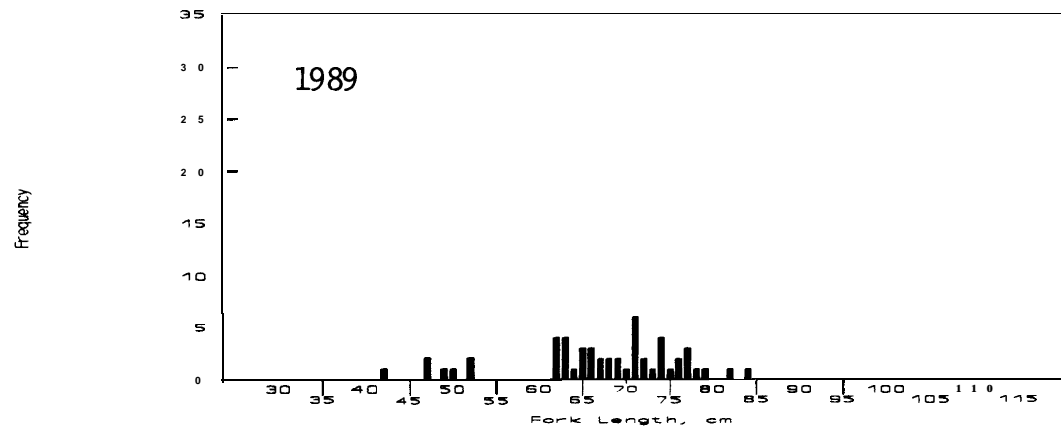
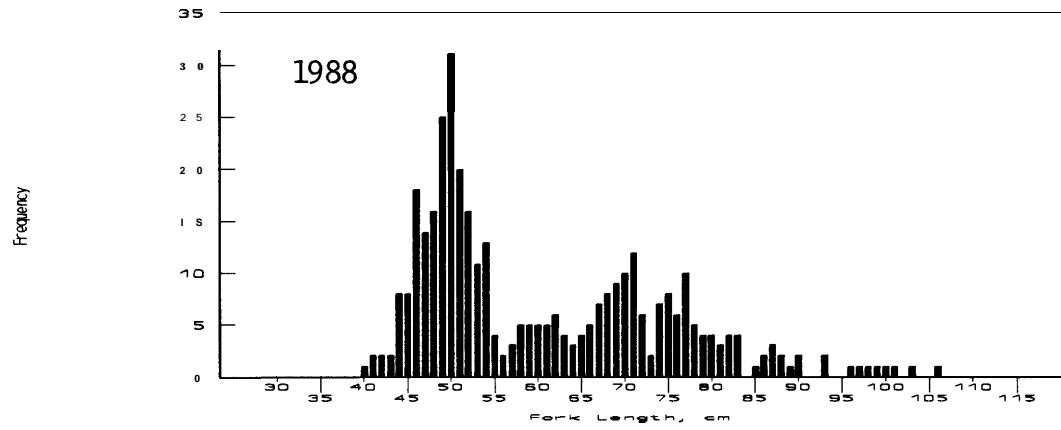
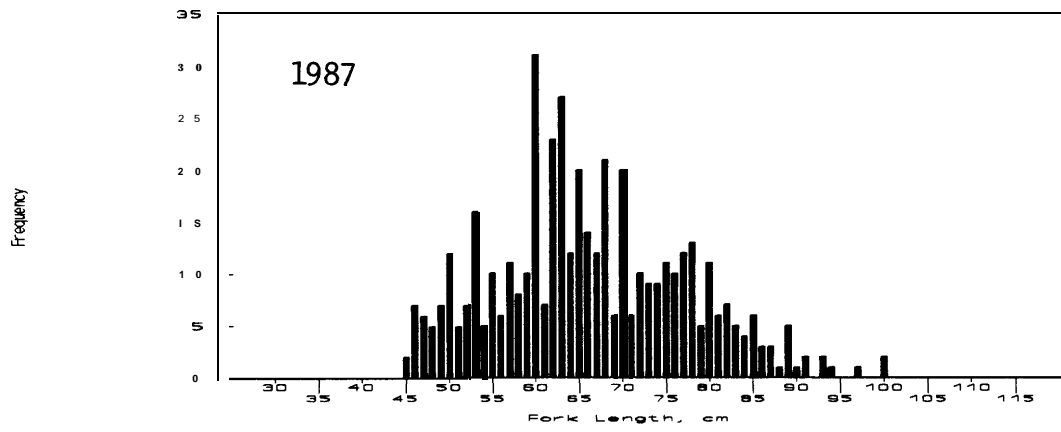


Figure 11 (continued). Length frequency diagrams of fall-run chinook salmon captured at the South Fork Trinity River Weir near Sandy Bar, 1984 through 1990.

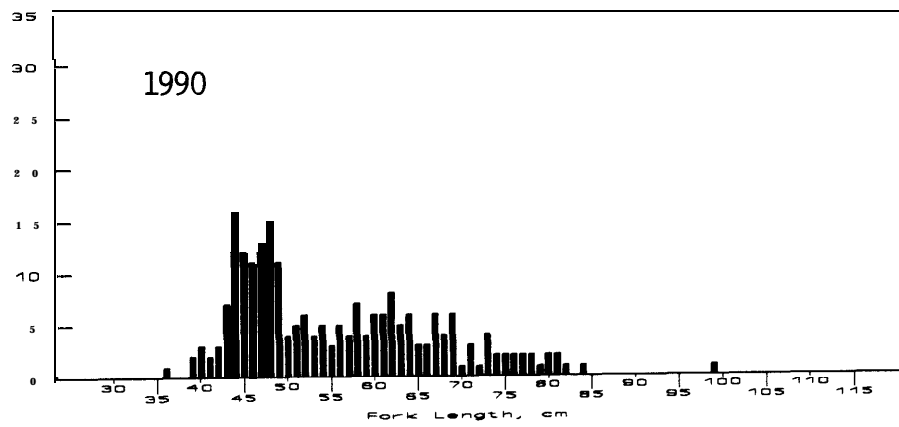


Figure 11 (continued). Length frequency diagrams of fall-run chinook salmon captured at the South Fork Trinity River Weir near Sandy Bar, 1984 through 1990.